



Compact Series User Manual

(for Apple and Android devices)



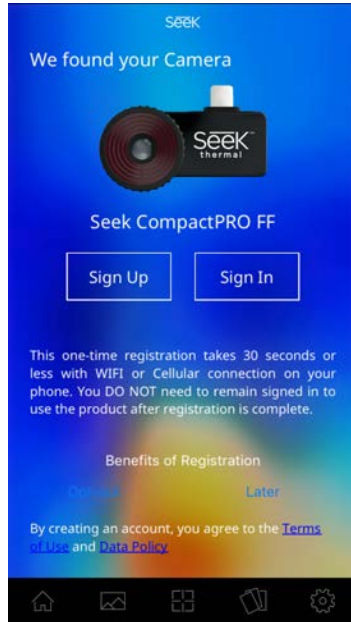
Welcome to the official Seek Thermal App! Let's take a few minutes to quickly walk through the basics of the App and learn how to use your Device.

Registration

Why Register?

We want you to have a great experience with your Seek product. By sharing your name, email, and serial number, you enable us to send you product updates and tips and techniques. We can also expedite your warranty inquiries by knowing when and where you purchased. Country information helps us to provide better local product support.

Registration is not required and you may choose to "Opt Out"

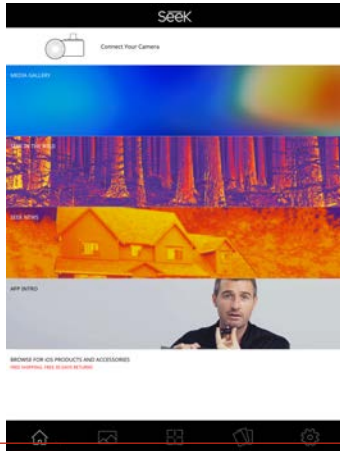


First Time Registration:

This one-time registration takes 30 seconds or less with WIFI or Cellular connection on your phone. You DO NOT need to remain signed in to use the product after registration is complete.

To read our data policy visit:

www.thermal.com/datapolicy



– **CAMERA TYPE INDICATOR:** Shows which type of thermal camera you have connected.

– **MEDIA GALLERY:** Here you will find all your photos & videos.

– **SEEK IN THE WILD:** See thermal images from the Seek community.

– **SEEK NEWS:** Read the latest articles featuring Seek Thermal.

– **APP INTRO:** Watch a variety of videos to help you get started with the new Seek Thermal app.

– **BROWSE FOR PRODUCTS AND ACCESSORIES:** Shop for the latest Seek Thermal gear.

Navigating with the Bottom Menu



Home icon: Select **HOME** to return to the App home page.



Media icon: Touch **MEDIA** to go to your gallery for photos & videos.



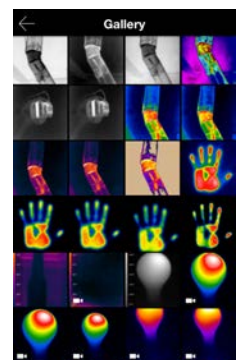
Mode icon: Touch **MODE** icon to access all features: Span & Level, Spot, HiLo and more.



Filters icon: Change your **PALETTES** while in Camera or Video mode any time here.

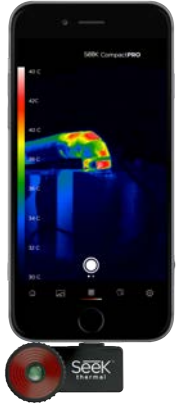


Settings icon: All **SETTINGS** and preferences are located here.



Thermal Imaging Modes

	Spot mode: Use the crosshair to pinpoint a specific temperature.
	Hi/Lo mode: Pinpoint the highest and lowest temperatures.
	Normal mode: Default mode that maximizes thermal image consistency using auto exposure control.
	Full Frame mode: Displays all temperature data for maximum clarity.
	Span and Level* mode: Easily set and lock a temperature range to display the maximum thermal information of any object or scene. CompactPRO Only*
	Threshold Above mode:
	Threshold Equals mode: Colorize temperatures that are above, equal to or below the temperature you set.
	Threshold Below mode:
	Thermal+ mode: Experimental mode that allows thermal and visual imaging side by side in real-time.

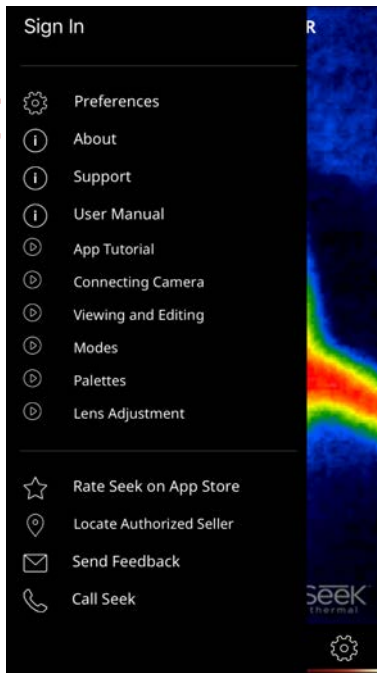


*Span and Level mode as well as emissivity control are only available with CompactPRO

Change temperature units (°C,°F,K), aspect ratio (4:3 or 16:9), and watermarks.

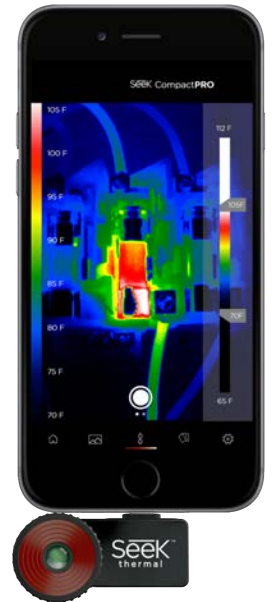
View helpful how-to videos on how to use the Seek Thermal app.

Rate our app and Contact us for more support.



Thermal Span and Level (CompactPro Only)

Easily set and lock a temperature range to display the maximum thermal information of any object or scene with a set point and range.



Emissivity Control (CompactPRO Only)



Emissivity is a material property that defines how much IR light is emitted from a particular surface. Calibrate for emissivity through four pre-defined settings to ensure accurate temperature readings and reporting.

Taking Photos & Video



Swipe left and right to switch between photo & video mode.



Made for iPhone iPhone 7+, iPhone SE, iPhone 6s Plus, iPhone 6s, iPhone 6 Plus, iPhone 6, iPhone 5s, iPhone 5c, and iPhone 5. For a list of supported Android devices visit: www.thermal.com/supported
Utilizes the power and display of your smartphone. (<280mW)

"Made for iPhone" means that an electronic accessory has been designed to connect specifically to iPhone, and has been certified by the developer to meet Apple performance standards. Please note that the use of this accessory with iPhone may affect wireless performance. iPhone® is a trademark of Apple Inc., registered in the U.S. and other countries.

Warranty

thermal.com/warranty

North America

Email: support@thermal.com
Phone: 1 (844) SEE-HEAT

Europe

Email: eu.support@thermal.com
Phone: +44 (0) 1425 284267

support.thermal.com