

## NEED HELP?

Visit [Jabra.com/help/speak750](https://Jabra.com/help/speak750)



Mises à jour gratuites pour votre  
Actualizaciones gratuitas para Speak  
Atualizações grátis para a sua fala  
免费提供 Speak 更新  
無料アップデート

[Jabra.com/register](https://Jabra.com/register)

81-04486 H

## GET STARTED

JABRA SPEAK 750



## FREE UPDATES FOR YOUR SPEAK

[Jabra.com/register](https://Jabra.com/register)

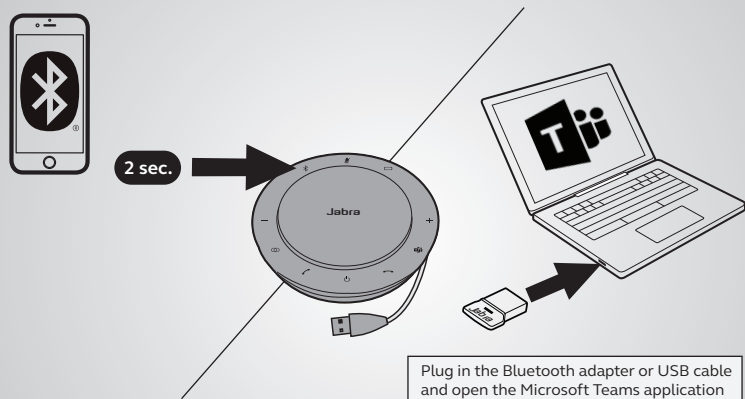
ENGLISH .....	1	TÜRKÇE.....	45
FRANÇAIS.....	5	FRANÇAIS (CANADA) .....	49
DEUTSCH .....	9	ESPAÑOL (MÉXICO) .....	53
NEDERLANDS.....	13	PORTUGUÊS (BRASIL) .....	57
ITALIANO .....	17	简体中文.....	61
PORTUGUÊS.....	21	繁體中文.....	65
ESPAÑOL .....	25	日本語 .....	69
DANSK/SVENSKA.....	29	한국어 .....	73
РУССКИЙ .....	33		
ČESKY.....	37		
POLSKI .....	41		



[Jabra.com/manuals](https://www.jabra.com/manuals)

# How to connect

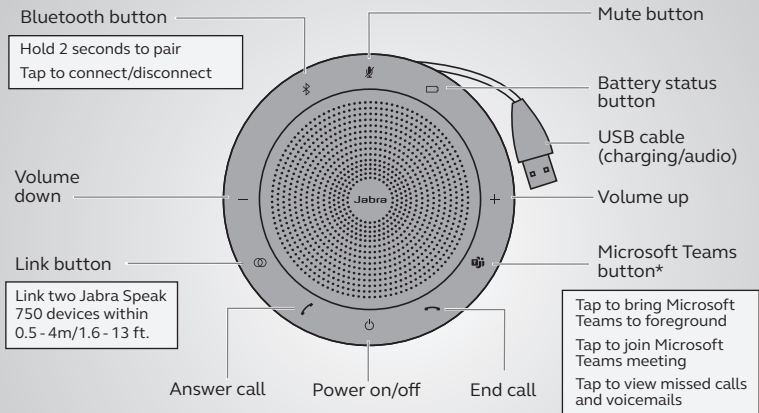
using Bluetooth or Bluetooth adapter



Before first time use, plug the USB cable into your computer.

# How to use

ENGLISH



Personalize your Jabra Speak 750 using the Jabra Direct software. Download for free at [jabra.com/direct](https://jabra.com/direct)

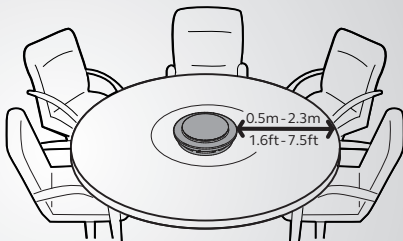
\*Button functionality depends on the Microsoft Teams desktop application

# Where to position

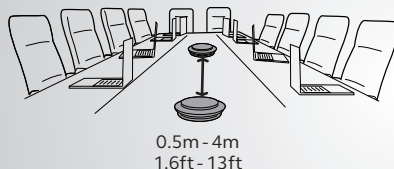
Desk



Small-sized meeting room



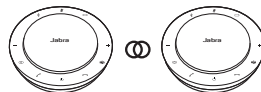
Medium-sized meeting room




Stereo media



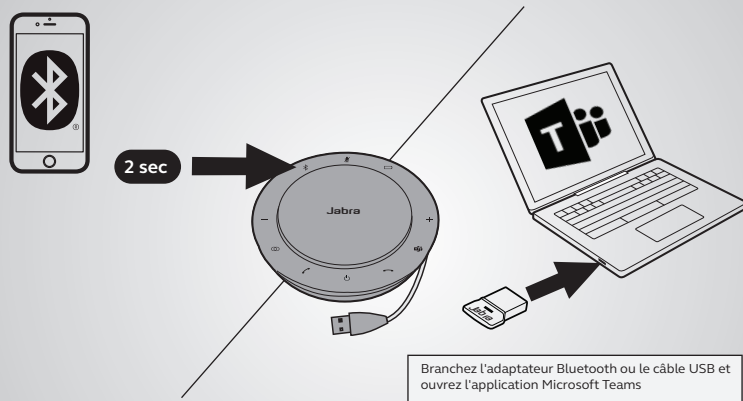
When playing music or watching a video use the stand to direct the audio towards you.



Tap  to link two Jabra Speak 750 devices within 0.5m - 4m or 1.6ft - 13ft.

# Instructions de connexion

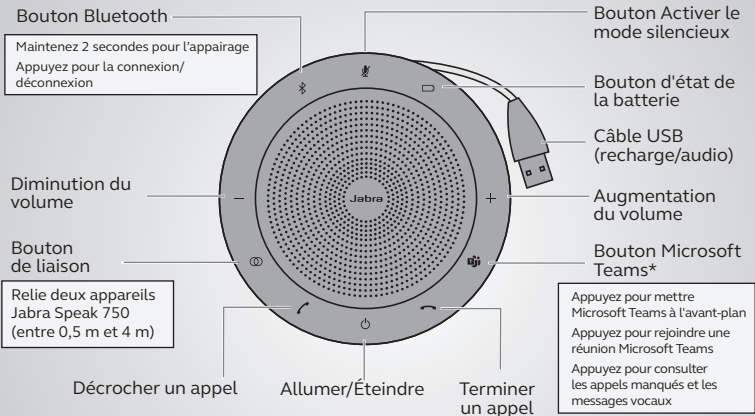
par Bluetooth ou adaptateur Bluetooth



Avant la première utilisation, branchez le câble USB dans votre ordinateur.

# Instruction d'utilisation

FRANÇAIS



Personnalisez votre Jabra Speak 750 à l'aide du logiciel Jabra Direct. Téléchargez-le gratuitement sur [jabra.com/direct](https://www.jabra.com/direct)

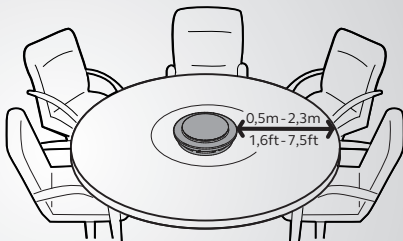
\*La fonctionnalité du bouton dépend de l'application de bureau Microsoft Teams. <sup>6</sup>

# Instructions de positionnement

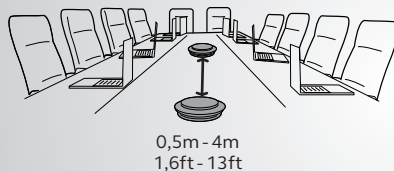
Bureau



Petite salle de réunion



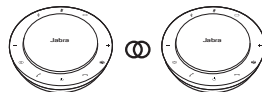
Salle de réunion de taille moyenne




Support stéréo

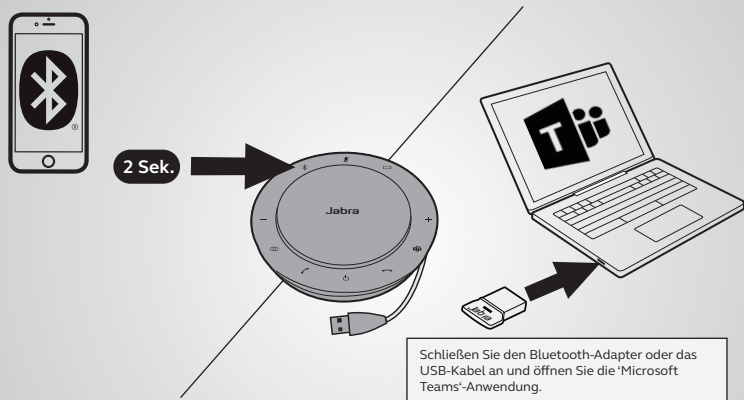


Lorsque vous écoutez de la musique ou visionnez une vidéo, utilisez le support pour mieux diriger l'audio.



Appuyez sur  pour relier deux appareils Jabra Speak 750 dans un rayon de 0,5 m - 4 m.

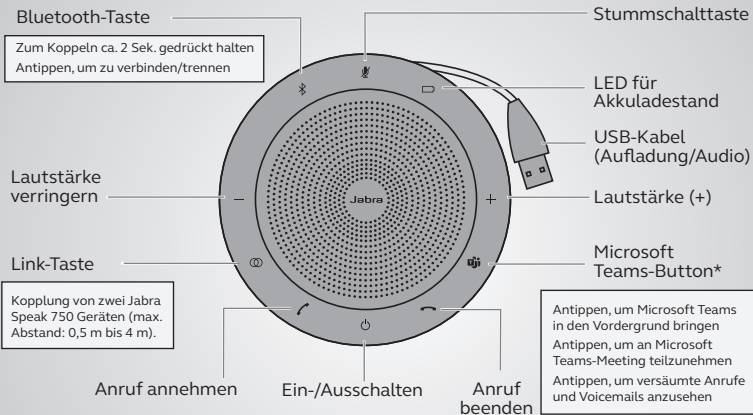
# So verbinden Sie Ihr Gerät via Bluetooth oder Bluetooth-Adapter



Schließen Sie das USB-Kabel vor der ersten Verwendung an Ihren Computer an.

# Verwendung des Geräts

DEUTSCH



Mit der Jabra Direct-Software kann das Jabra Speak 750 personalisiert werden. Kostenloser Download über [jabra.com/direct](https://jabra.com/direct)

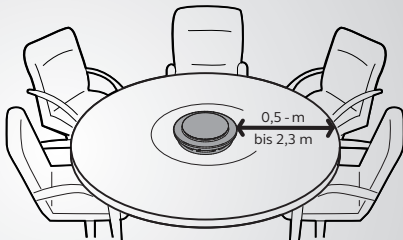
\*Button-Funktionalität von Microsoft Teams-Desktop-Anwendung abhängig

# Aufstellung des Geräts

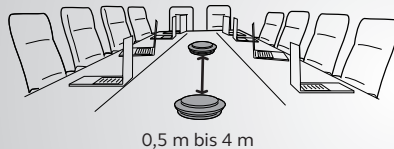
Schreibtisch



Kleiner Tagungsraum



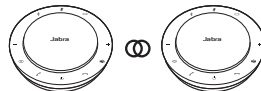
Mittelgroßer Tagungsraum



Stereo-Medien



Wenn Sie Musik abspielen oder ein Video ansehen, benutzen Sie das Stativ, um den Ton auf Sie zu richten.

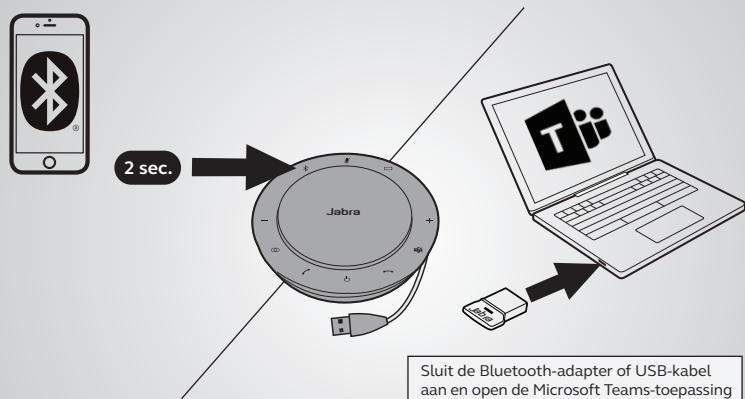


⊕ antippen, um zwei Jabra Speak 750 zu koppeln (max. Abstand: 0,5 m bis 4 m).



# Verbinding maken

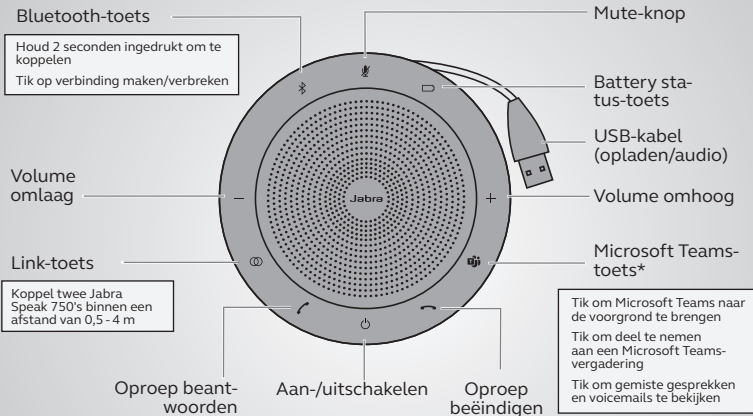
via Bluetooth of Bluetooth-adapter



Steek de USB-kabel voor het eerste gebruik in uw computer.

# Gebruiken

NEDERLANDS

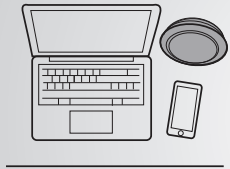


Personaliseer uw Jabra Speak 750 via de Jabra Direct-software.  
Download gratis op [jabra.com/direct](https://jabra.com/direct)

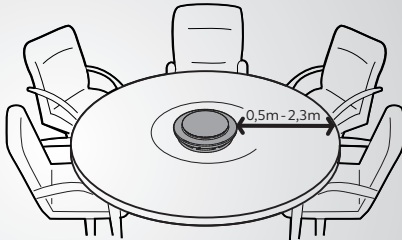
\*Functionaliteit van de toets afhankelijk van de Microsoft Teams-desktoptoepassing

# Plaatsing

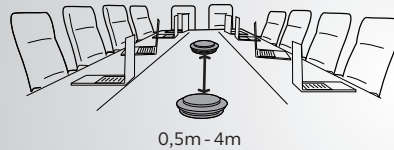
Bureau



Kleine vergaderruimte



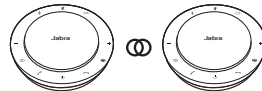
Medium vergaderruimte




Stereomedia



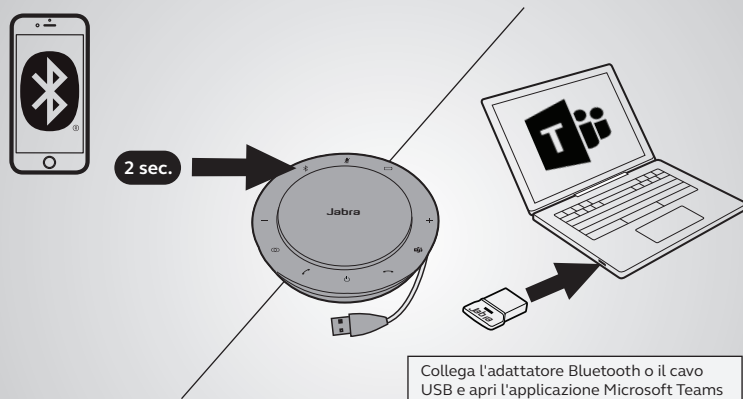
Wanneer u naar muziek luistert of een video bekijkt, gebruikt u de standaard om de audio naar u te richten.



Tik op  om twee Jabra Speak 750's binnen een afstand van 0,5 - 4 m te koppelen

# Connessione

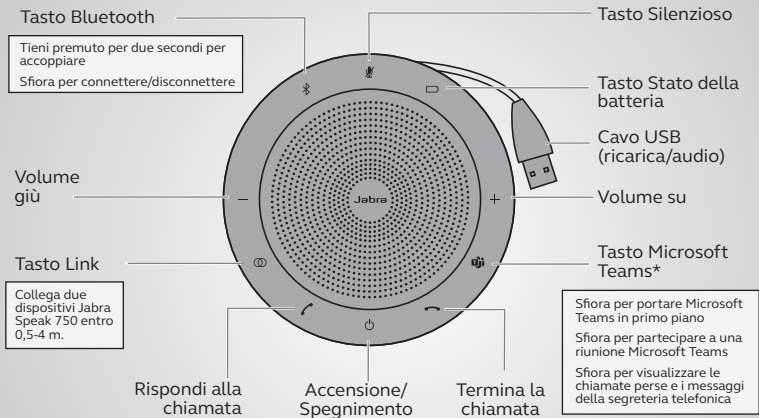
con il Bluetooth o l'adattatore USB



Prima del primo utilizzo, collega il cavo USB al tuo computer.

# Utilizzo

ITALIANO



Personalizza Jabra Speak 750 utilizzando il software Jabra Direct. Scaricalo gratuitamente su [jabra.com/direct](https://jabra.com/direct)

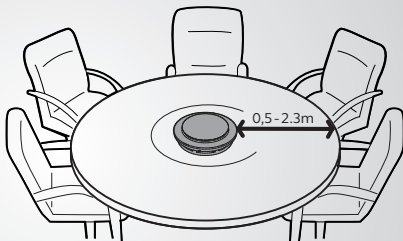
\*La funzionalità del tasto dipende dall'applicazione desktop Microsoft Teams

# Dove posizionarlo

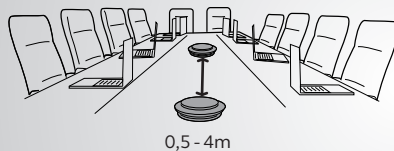
Scrivania



Sala riunioni piccola



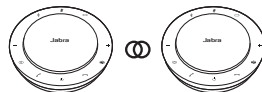
Sala riunioni media



Supporti stereo



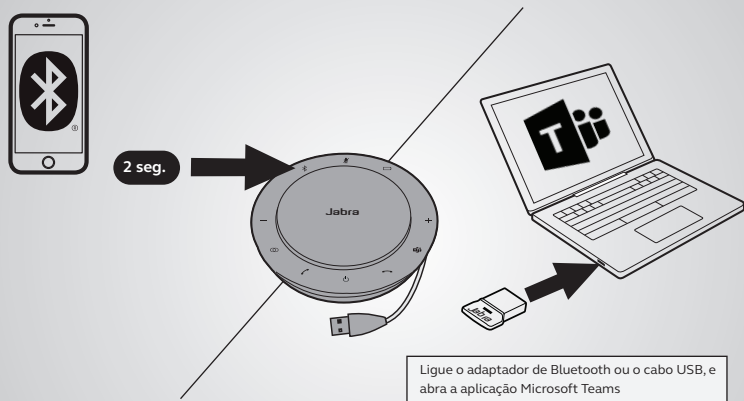
Quando riproduci musica o guardi un video, usa il supporto per indirizzare l'audio verso di te.



Sfiora  per collegare due dispositivi Jabra Speak 750 entro 0,5-4 m.

# Como ligar

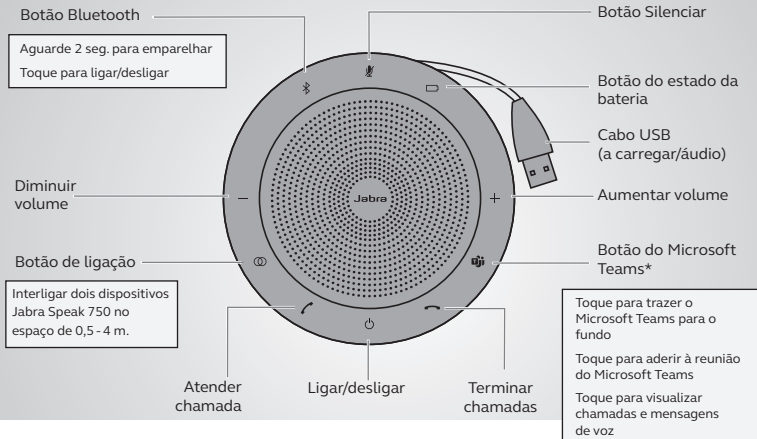
utilizando o Bluetooth ou o adaptador de Bluetooth



Antes da primeira utilização, ligue o cabo USB ao seu computador.

# Como utilizar

PORTUGUÊS



Personalize o seu Jabra Speak 750 utilizando o software Jabra Direct. Efetue o download grátis em [jabra.com/direct](https://jabra.com/direct)

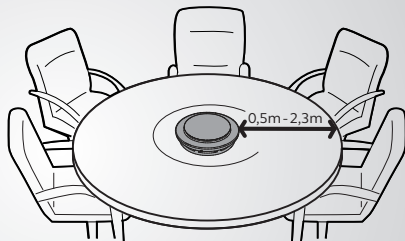
\*A funcionalidade do botão depende do cliente da aplicação para computador Microsoft Teams.

# Onde posicionar

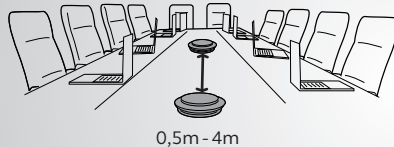
## Secretária



## Sala de reuniões pequena



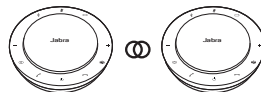
## Sala de reuniões média




## Meios estéreo



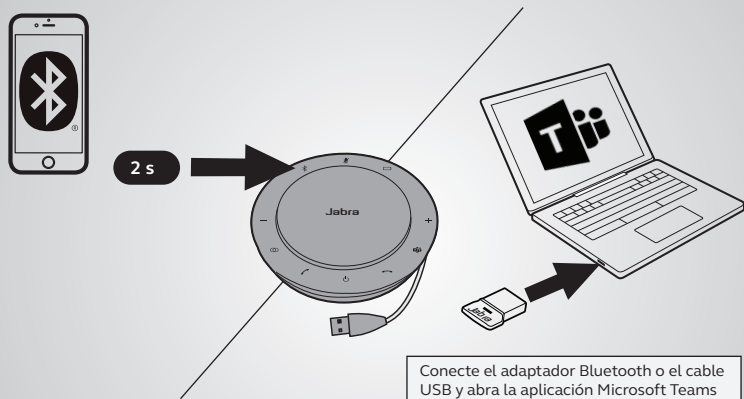
Ao reproduzir música ou ao ver um vídeo, utilize o apoio para direcionar o áudio para si.



Toque  para interligar dois dispositivos Jabra Speak 750 no espaço de 0,5 - 4 m.

# Cómo se conecta

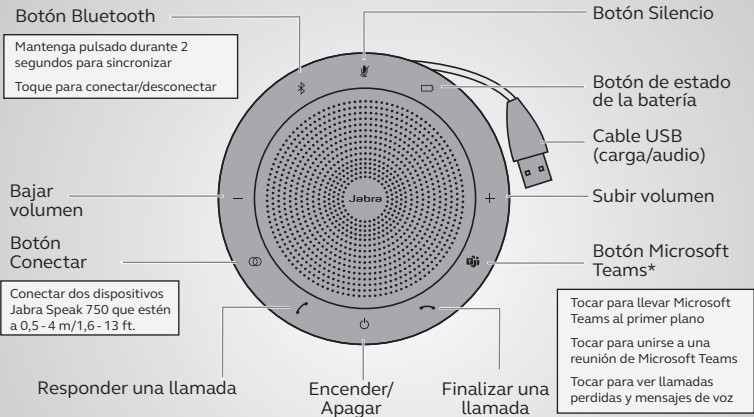
usando Bluetooth o un adaptador Bluetooth



Antes de usarlo por primera vez, conecte el cable USB en su ordenador.

# Cómo se usa

ESPAÑOL



Personalice su Jabra Speak 750 con el software Jabra Direct. Descárguelo gratis en [jabra.com/direct](https://www.jabra.com/direct)

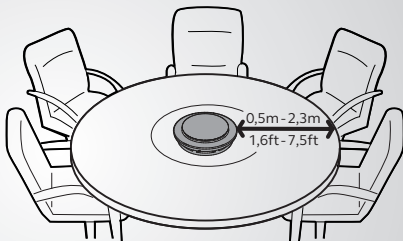
\*La función del botón depende de la aplicación de escritorio Microsoft Teams

# Dónde se coloca

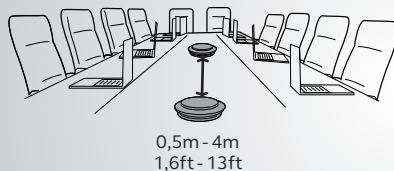
Escritorio



Sala de reuniones pequeña



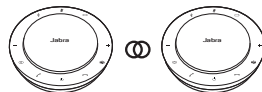
Sala de reuniones mediana




Medios estéreo



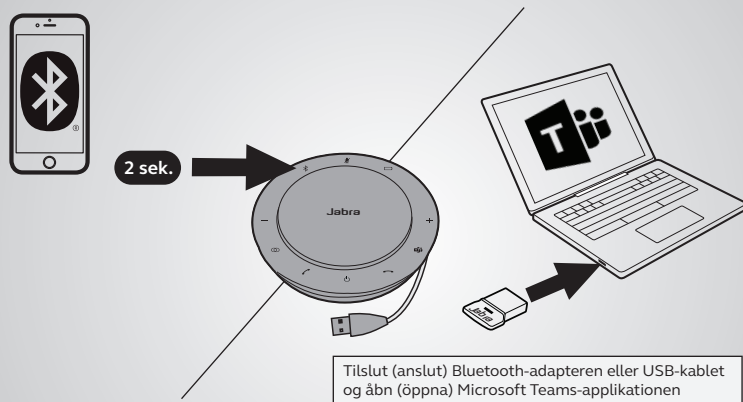
Al reproducir música o ver un vídeo, use el soporte para dirigir el sonido hacia usted.



Tocar  para conectar dos dispositivos Jabra Speak 750 que estén a 0,5 m - 4 m (1,6 ft - 13 ft).



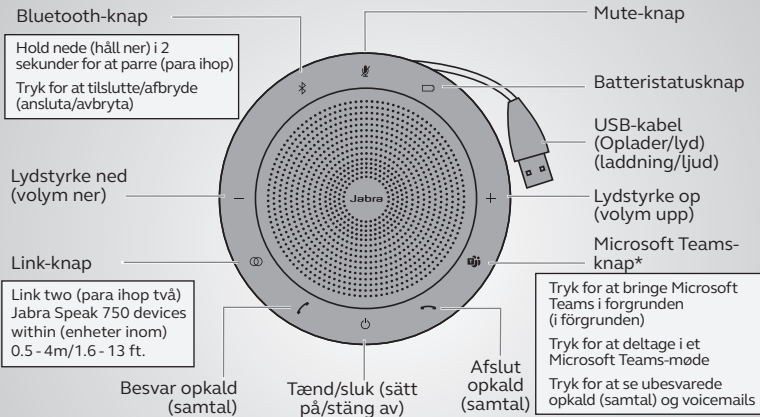
# Sådan tilslutter (ansluter) du med Bluetooth eller en Bluetooth-adapter



Sæt USB-kablet i computeren inden første brug (första användning).

# Brugsanvisning

DANSK/SVENSKA



Tilpas (anpassa) din Jabra Speak 750 med Jabra Direct-softwaren. Kan downloades gratis på [jabra.com/direct](https://jabra.com/direct)

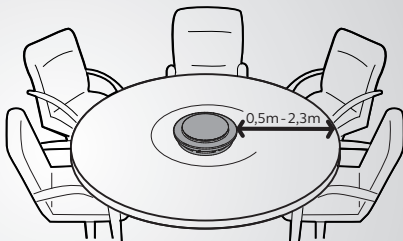
\*Knappens funktionalitet afhænger (beror på) af Microsoft Teams-skrivebordsapplikation

# Placering

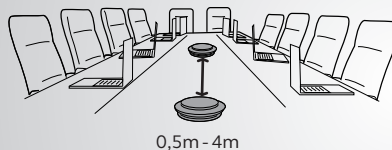
Skrivebord



Lille mødelokale



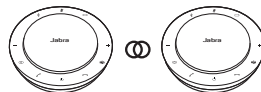
Mellemstort mødelokale




Stereomedie



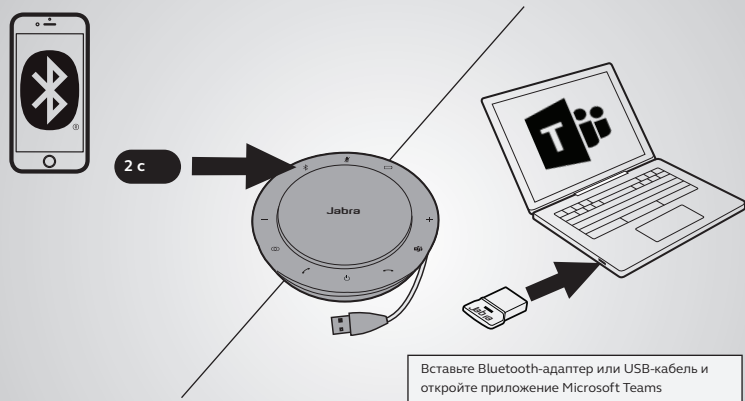
Brug stativet ved afspilning (uppspelning) af musik eller video for at dirigere lyden (rikta lyudet) imod dig.



Tryk på  for at forbinde to (ansluta två) Jabra Speak 750-enheder inden for (inom) 0,5 m-4 m eller 1,6 ft-13 ft.

# Подключение

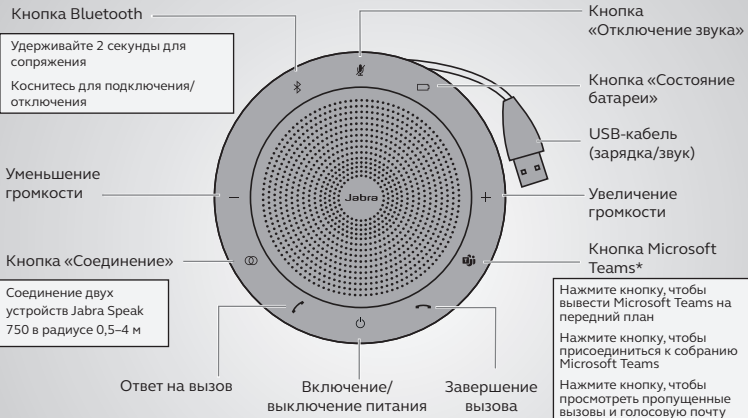
с помощью Bluetooth или Bluetooth-адаптера



Перед первым использованием вставьте USB-кабель в компьютер.

# Использование

РУССКИЙ



Настройте Jabra Speak 750+ под свои нужды с помощью программного обеспечения Jabra Direct. Загрузите бесплатно на сайте [jabra.com/direct](http://jabra.com/direct)

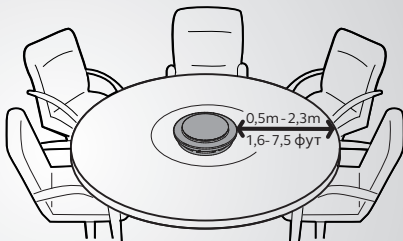
\*Функциональность кнопки зависит от классического приложения Microsoft Teams

# Размещение

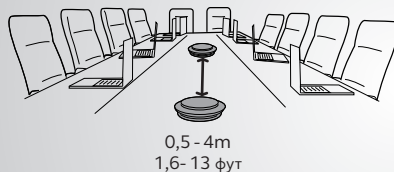
Стол



Небольшой конференц-зал



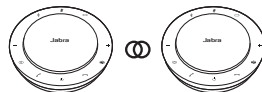
Средний конференц-зал




Мультимедийная стереосистема



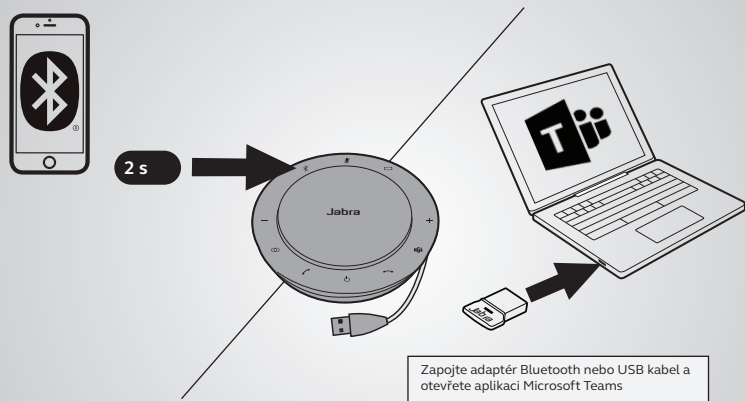
При воспроизведении музыки или просмотре видеороликов, используйте подставку, чтобы направлять звук в вашу сторону.



Нажмите , чтобы установить соединение двух устройств Jabra Speak 750 в радиусе 0,5 – 4 м.

# Připojení

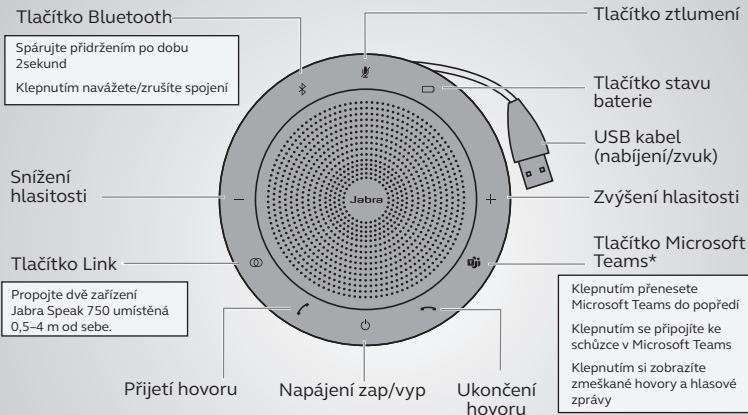
pomocí Bluetooth nebo adaptéru Bluetooth



Před prvním použitím zapojte USB kabel do počítače.

# Způsob použití

ČESKY



Pomocí softwaru Jabra Direct si můžete Jabra Speak 750 upravit dle vlastních preferencí. Stáhněte si jej zdarma na [jabra.com/direct](https://jabra.com/direct)

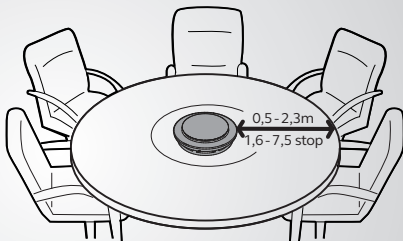
\*Funkce tlačítka závisí na desktopové aplikaci Microsoft Teams

# Kam umístit

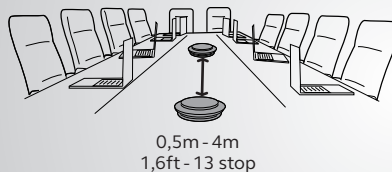
Pracovní stůl



Malá jednací místnost



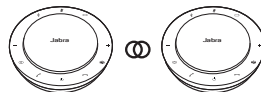
Střední jednací místnost



Stereo média



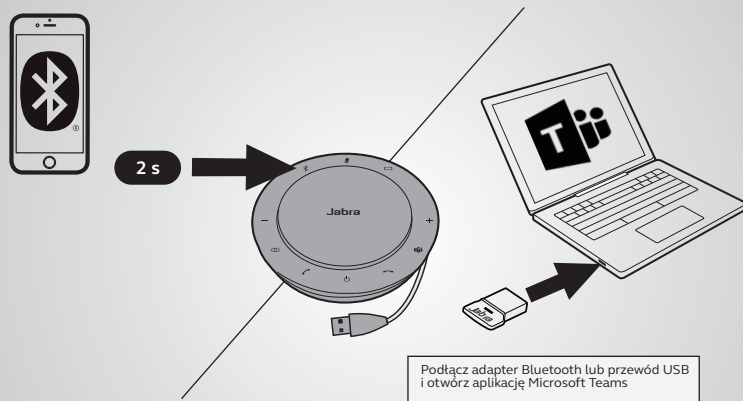
Při přehrávání hudby nebo sledování videa nasměrujte zvuk k sobě s použitím stojánku.



Klepnutím na  propojte dvě zařízení Jabra Speak 750 umístěná 0,5–4 m od sebe.

# Podłączanie

przy użyciu interfejsu Bluetooth lub adaptera Bluetooth



Przed pierwszym użyciem podłącz przewód USB do komputera.

# Obsługa

Przycisk Bluetooth:

Przytrzymaj 2 s, aby sparować  
Dotknij, aby połączyć/rozłączyć

Zmniejszanie  
głośności

Przycisk Link

Łączenie dwóch  
urządzeń Jabra Speak  
750 w odległości 0,5-4 m

Odbieranie  
połączenia

Włączanie/wyłączenie  
zasilania

Kończenie  
połączenia

Przycisk  
wyciszenia

Przycisk stanu  
akumulatora

Przewód USB  
(ładowane/audio)

Zwiększanie  
głośności

Przycisk Microsoft  
Teams\*

Dotknij, aby przenieść  
aplikację Microsoft Teams na  
pierwszy plan

Dotknij, aby dołączyć do  
spotkania Microsoft Teams

Dotknij, aby wyświetlić  
nieodebrane połączenia i  
wiadomości głosowe

Dostosuj urządzenie Jabra Speak 750 pomocą oprogramowania Jabra Direct. Pobierz bezpłatnie ze strony [jabra.com/direct](http://jabra.com/direct)

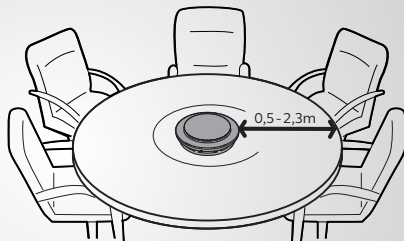
\*Funkcja przycisku zależy od aplikacji na pulpit Microsoft Teams

# Sposób ustawienia

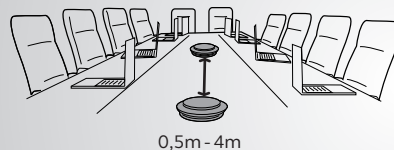
Biurko



Niewielki pokój konferencyjny



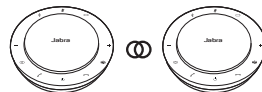
Średni pokój konferencyjny




Media stereo



Odtwarzając muzykę lub oglądając filmy, użyj podstawki, aby skierować dźwięk w swoją stronę.

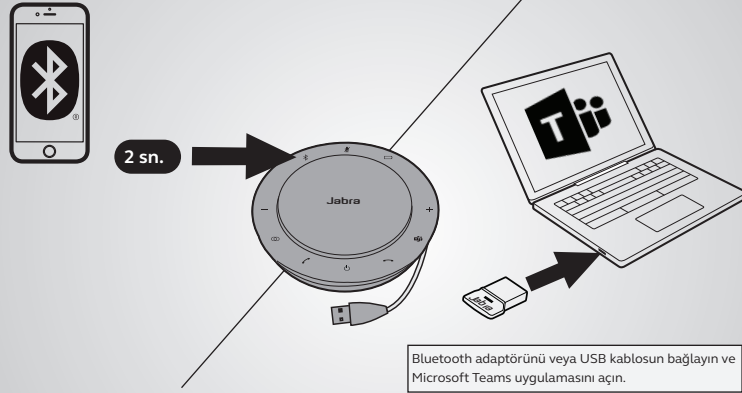


Dotknij,  aby połączyć dwa urządzenia Jabra Speak 750 w odległości 0,5–4 m.



# Bağlantı kurma

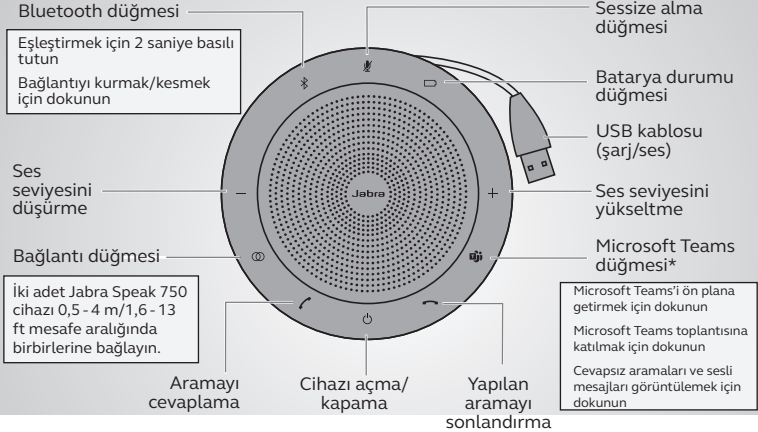
Bluetooth veya Bluetooth adaptörü ile



İlk kullanımdan önce USB kablosunu bilgisayarınıza bağlayın.

# Kullanım

TÜRKÇE



Jabra Speak 750'inizi Jabra Direct yazılımı ile kişiselleştirin.  
[jabra.com/direct](https://jabra.com/direct) adresinden ücretsiz olarak indirin

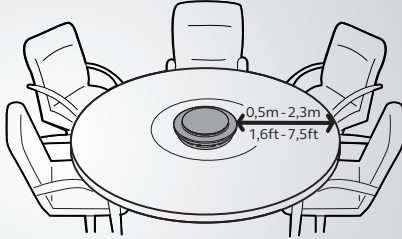
\*Düğmenin fonksiyonu, Microsoft Teams masaüstü uygulamasına bağlıdır

# Cihaz nerede kurulmalı

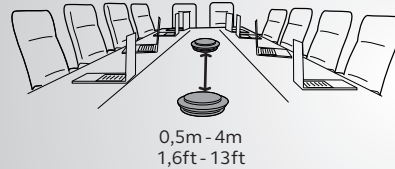
Masa



Küçük ölçekli toplantı odası



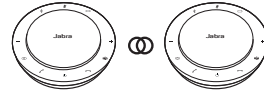
Orta ölçekli toplantı odası




Stereo medya



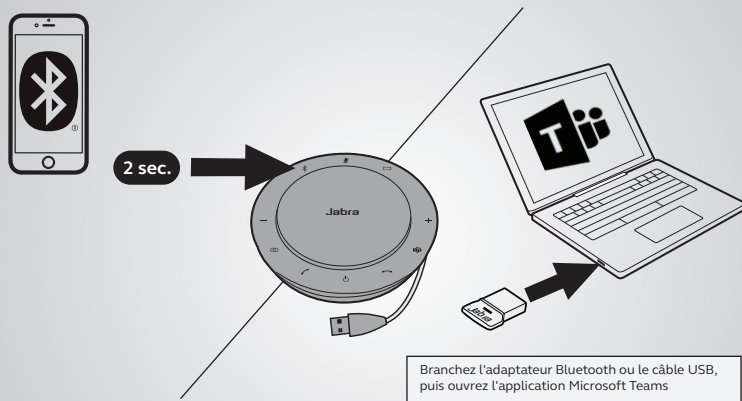
Müzik çalarken veya video izlerken sesi kendinize doğru yönlendirmek için standı kullanın.



İki adet Jabra Speak 750 cihazı 0,5m - 4 m veya 1,6ft - 13ft mesafe aralığında birbirlerine bağlamak için  simgesine dokununuz.

# Comment se connecter

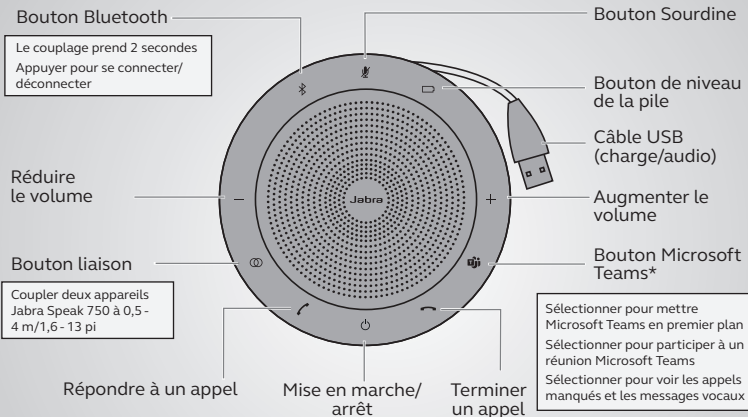
avec Bluetooth ou une clé USB



Avant la première utilisation, branchez le câble USB dans votre ordinateur.

# Comment l'utiliser

FRANÇAIS (CANADA)



Personnaliser votre Jabra Speak 750+ en utilisant le logiciel Jabra Direct. Télécharger gratuitement sur [jabra.com/direct](https://jabra.com/direct)

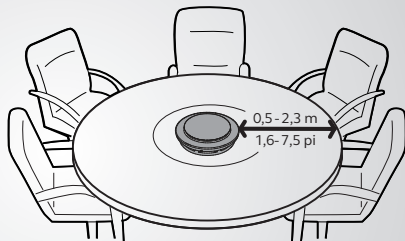
\*La fonctionnalité du bouton dépend de l'application de bureau Microsoft Teams

# Où le placer

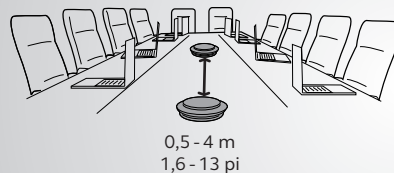
Bureau



Petite salle de réunion



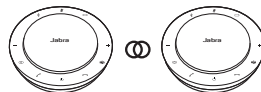
Salle de réunion de taille moyenne




Support stéréo



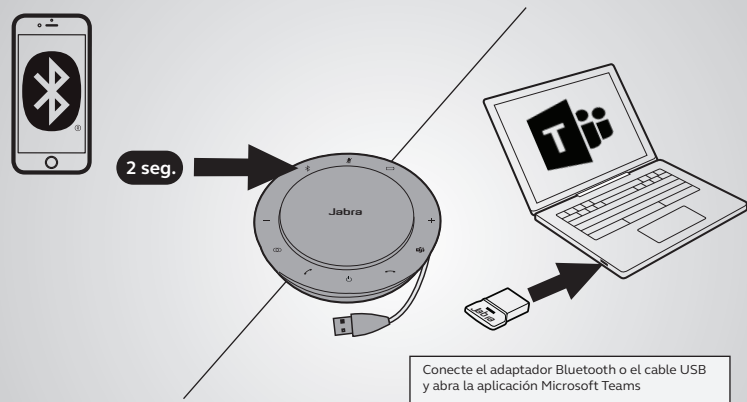
Pour écouter de la musique ou regarder une vidéo, utiliser le support pour diriger le son vers vous.



Sélectionner  pour coupler deux appareils Jabra Speak 750 à 0,5 - 4 m / 1,6 - 13 pi

# Cómo conectarse

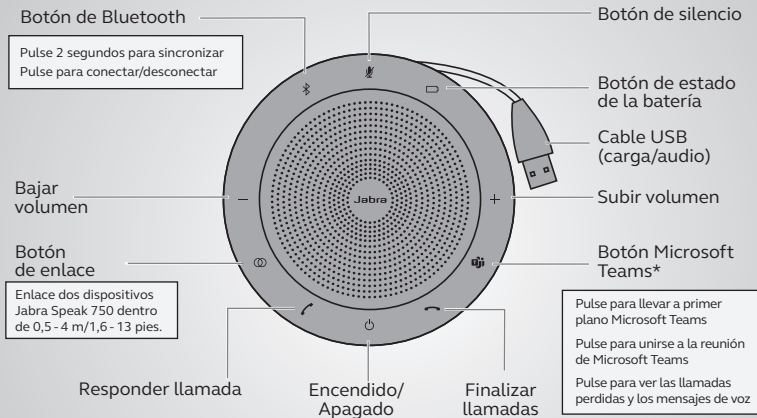
mediante Bluetooth o con el adaptador Bluetooth



Antes del primer uso, conecte el cable USB a su computadora.

# Cómo se usa

ESPAÑOL (MÉXICO)



Personalice su Jabra Speak 750 usando el software Jabra Direct. Descárguelo gratis en [jabra.com/direct](https://www.jabra.com/direct)

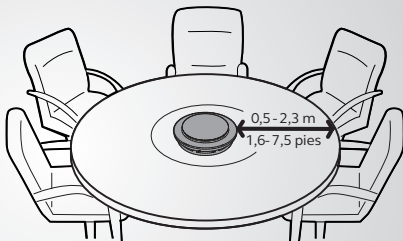
\*La funcionalidad del botón depende de la aplicación de escritorio Microsoft Teams

# Dónde colocarlo

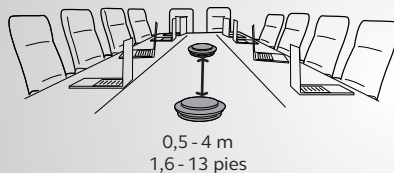
Escritorio



Sala de juntas pequeña



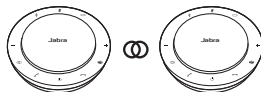
Sala de juntas mediana




Sistemas estereofónicos



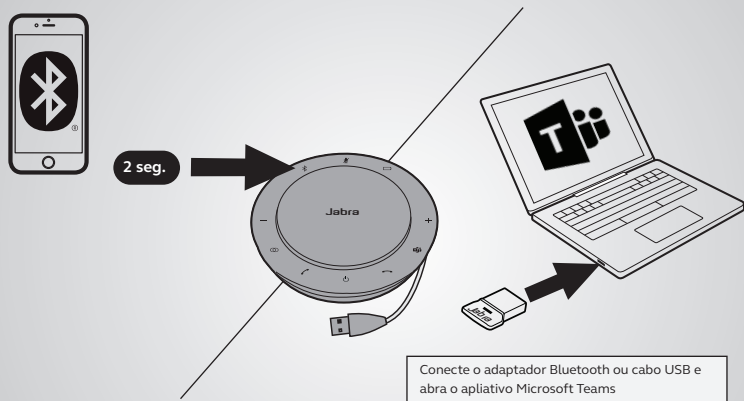
Cuando reproduzca música o vea un video, use el soporte para dirigir el audio hacia usted.



Pulse  para enlazar dos dispositivos Jabra Speak 750 dentro de 0,5 m - 4 m o 1,6 - 13 pies.

# Como se conectar

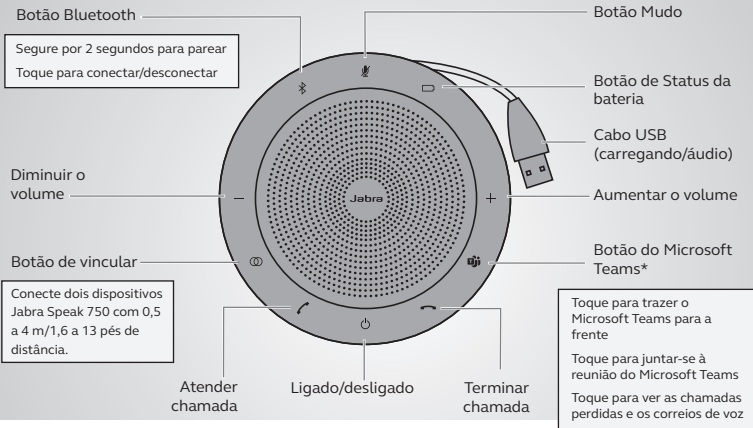
usando Bluetooth ou adaptador de Bluetooth



Antes do primeiro uso, conecte o cabo USB no seu computador.

# Como usar

PORTUGUÊS (BRASIL)



Personalize o seu Jabra Speak 750 usando o software Jabra Direct. Baixe gratuitamente em [jabra.com/direct](https://jabra.com/direct)

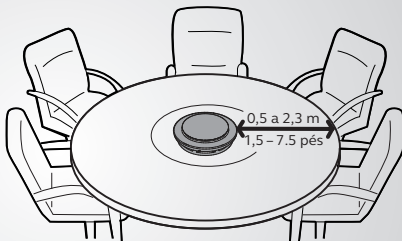
\*A funcionalidade do botão depende do aplicação desktop Microsoft Teams

# Onde posicionar

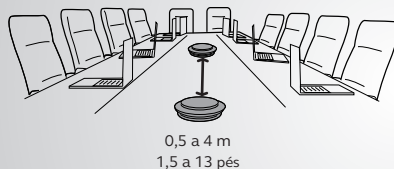
Mesa



Sala de reunião pequena



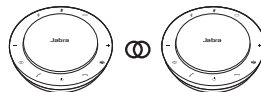
Sala de reunião média




Mídia estéreo



Ao tocar música ou assistir a um vídeo, use o suporte para direcionar o áudio para você.

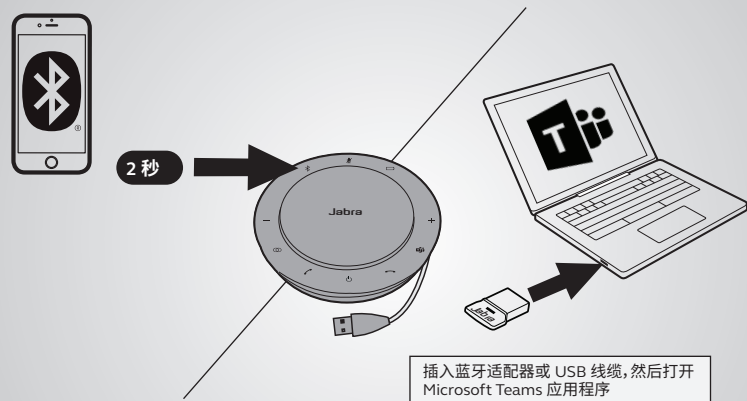


Toque  para conectar dois dispositivos Jabra Speak 750 com 0,5 a 4 m de distância.



# 如何使用蓝牙或蓝牙适配器进行连接

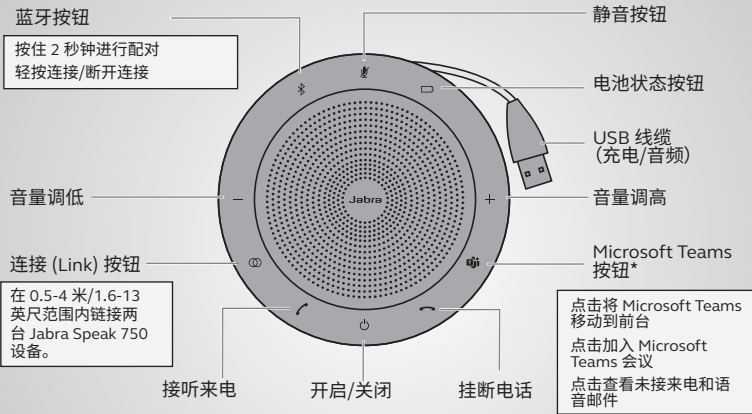
进行连接



首次使用前, 请将 USB 线缆插入电脑。

# 使用方式

简体中文



使用 Jabra Direct 软件个性化您的 Jabra Speak 750 从 [jabra.com/direct](http://jabra.com/direct) 免费下载

消费者若使用电源适配器供电, 则应购买配套使用获得CCC认证并满足标准要求的电源适配器

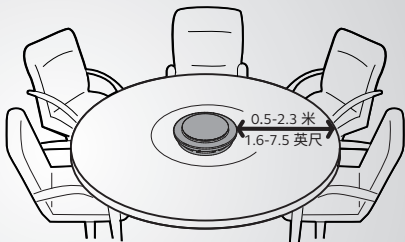
\*按钮功能取决于 Microsoft Teams 桌面应用程序

# 摆放位置

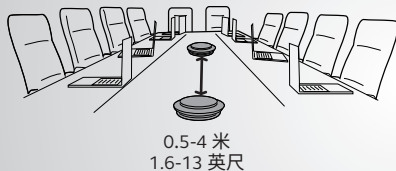
## 桌面



## 小型会议室



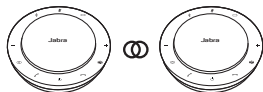
## 中型会议室




## 立体声媒体

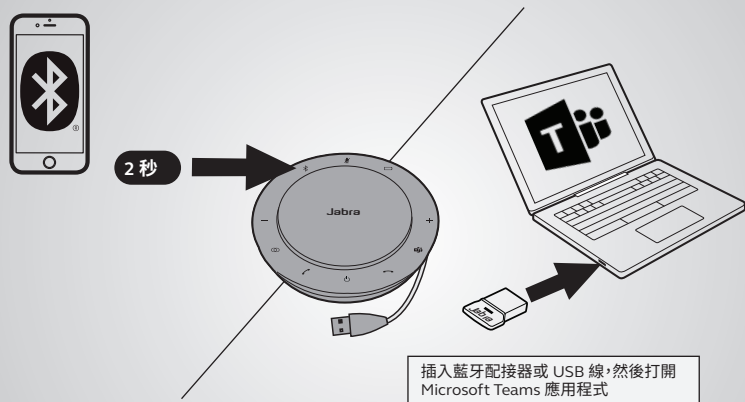


播放音乐或观看视频时，请使用支架让音频朝向您。



点击  在 0.5-4 米或1.6-13 英尺范围内链接两台 Jabra Speak 750 设备。

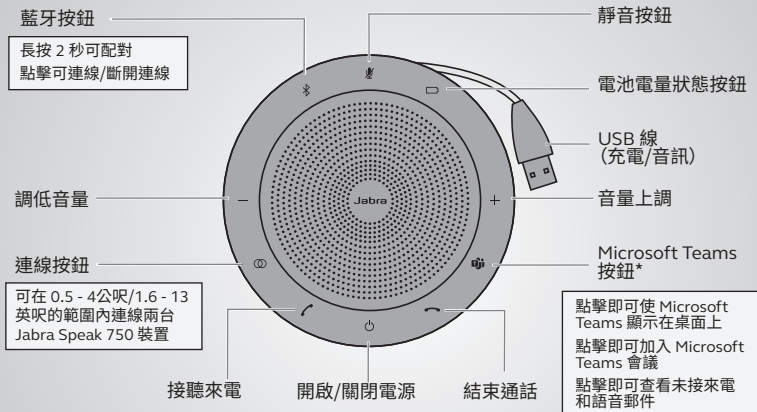
# 如何使用藍牙或藍牙配接器 連線



首次使用前, 請將 USB 線插入您的電腦。

# 如何使用

繁體中文



利用 Jabra Direct 軟體可對 Jabra Speak 750 進行個人化設定。請至 [jabra.com/direct](https://jabra.com/direct) 免費下載

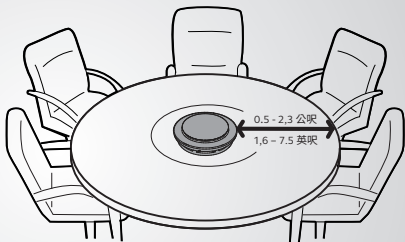
\*按鈕功能視 Microsoft Teams 桌面應用程式而定

# 擺設位置

## 辦公桌



## 小型會議室



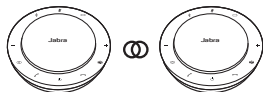
## 中型會議室




## 立體聲媒體



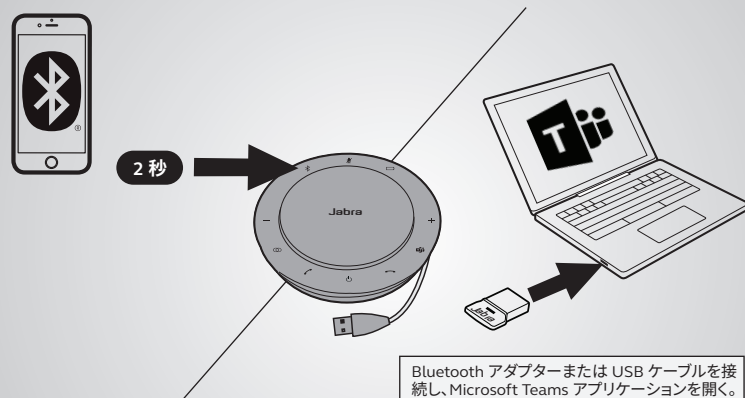
播放音樂或觀看視訊時，可轉動立架使音訊朝向您。



點擊可在 0.5 公尺 - 4 公尺或 1.6 英尺 - 13 英尺的範圍內連線兩台 Jabra Speak 750 裝置。

# 接続方法

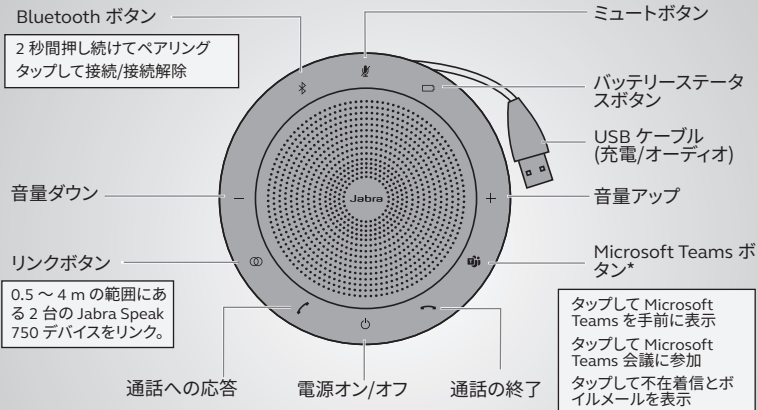
Bluetooth または Bluetooth アダプターを使用



初回の使用前に、USB ケーブルをコンピュータに接続します。

# 使用方法

日本語



Jabra Direct ソフトウェアを使用して Jabra Speak 750 をカスタマイズします。[jabra.com/direct](https://jabra.com/direct) から無料でダウンロード

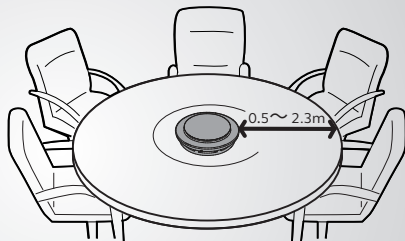
\*ボタンの機能は Microsoft Teams デスクトップアプリケーションによって異なります 70

# 使用場所

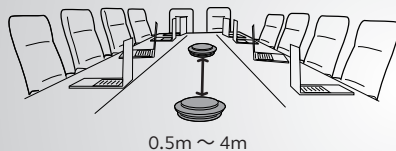
デスク



小さな会議室



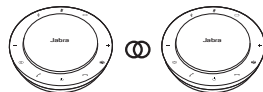
小さな会議室



ステレオメディア



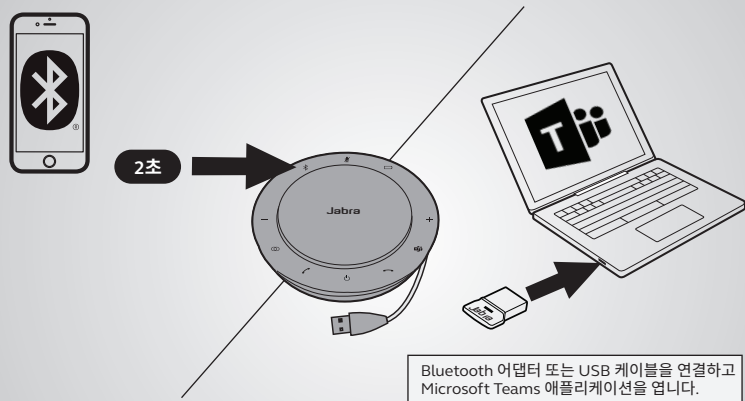
音楽またはビデオの再生中、スタンドを使用してオーディオをこちらに向けます。



⊕ をタップして 0.5 ~ 4 m の範囲にある 2 台の Jabra Speak 750 デバイスをリンクします。

# 연결하는 방법

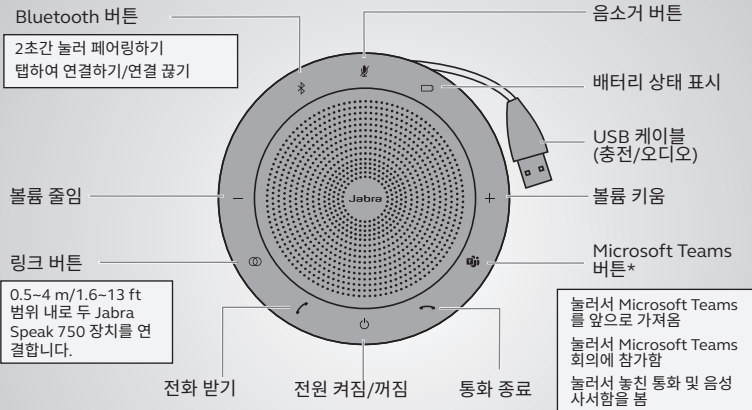
Bluetooth 또는 Bluetooth 어댑터 사용



처음 사용하기 전에 USB 케이블을 컴퓨터에 연결하십시오.

# 사용 방법

한국어



Jabra Direct 소프트웨어를 사용하여 Jabra Speak 750을 사용자 정의합니다. [jabra.com/direct](http://jabra.com/direct)에서 무료 다운로드하기

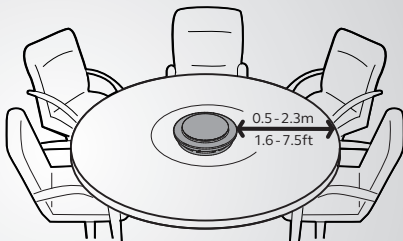
\*버튼 기능은 Microsoft Teams 데스크톱 애플리케이션트에 따른

# 배치

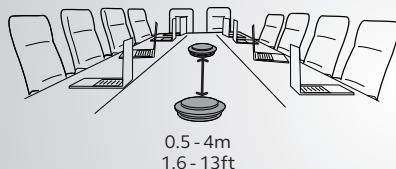
데스크



작은 회의실



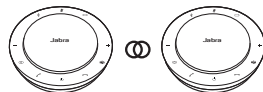
중간 크기의 회의실



스테레오 미디어



음악을 재생하거나 동영상을 볼 때 스탠드를 사용하여 소리를 사용자 쪽으로 향하게 합니다.



눌러서  $\odot$  0.5~4m/1.6~13ft 범위 내로 두 Jabra Speak 750 장치를 연결합니다.





本产品符合中国[电器电子产品有害物质限制使用管理办法]-简称中国ROHS, 本产品及其包装材料可能含有有害物质的名称和含量, 如下所示:

部件名称	有害物质					
	铅 (Pb)	汞 (Hg)	镉 (Cd)	六价铬 (Cr (VI))	多溴联苯 (PBB)	多溴二苯醚 (PBDE)
电子元器件	X	0	0	0	0	0
连接器	X	0	0	0	0	0
麦克风	X	0	0	0	0	0
交流电源插头 (若提供了交流充电器)	X	0	0	0	0	0

本表格依据SJ/T 11364 的规定编制。

O: 表示该有害物质在该部件所有均质材料中的含量低于GB/T 26572规定的限量要求。  
X: 表示该有害物质至少在该部件的某一均质材料中的含量超出GB/T 26572规定的限量要求。  
所有显示 X 的情况, 是按照欧盟 RoHS 采用了容许的豁免指标。

如本手册所述, 在正常使用条件下, 本产品的环保使用期为 10 年。在此期间, 产品不会泄露任何危险物质。

本产品可以回收, 必须按照当地法规处理。

設備名稱: 藍牙揚聲器, 型號(型式): PHS040Wa Equipment name Type designation (Type)						
單元 Unit	限用物質及其化學符號 Restricted substances and its chemical symbols					
	鉛 Lead (Pb)	汞 Mercury (Hg)	鎘 Cadmium (Cd)	六價鉻 Hexavalent chromium (Cr+6)	多溴聯苯 Polybrominated biphenyls (PBB)	多溴二苯醚 Polybrominated diphenyl ethers (PBDE)
塑膠殼體	○	○	○	○	○	○
電路板	—	○	○	○	○	○
揚聲器	○	○	○	○	○	○
USB轉接頭	○	○	○	○	○	○
金屬緊固件	—	○	○	○	○	○

備考1. “超出0.1 wt %”及“超出0.01 wt %”係指限用物質之百分比含量超出百分比含量基準值。  
Note 1: “Exceeding 0.1 wt %” and “exceeding 0.01 wt %” indicate that the percentage content of the restricted substance exceeds the reference percentage value of presence condition.

備考2. “○”係指該項限用物質之百分比含量未超出百分比含量基準值。  
Note 2: “○” indicates that the percentage content of the restricted substance does not exceed the percentage of reference value of presence.

備考3. “—”係指該項限用物質為排除項目。  
Note 3: The “—” indicates that the restricted substance corresponds to the exemption.

## Modelo: PHS040Wa/END040W



Agência Nacional de Telecomunicações

**00711-20-05774**

**05623-17-05774**

Este equipamento não tem direito à proteção contra interferência prejudicial e não pode causar interferência em sistemas devidamente autorizados.

Para maiores informações, consulte o site da ANATEL: [www.anatel.gov.br](http://www.anatel.gov.br).

© 2020 GN Audio A/S. All rights reserved. Jabra® is a trademark of GN Audio A/S. The Bluetooth® word mark and logos are registered trademarks owned by the Bluetooth SIG, Inc. and any use of such marks by GN Audio A/S is under license.

MADE IN CHINA

MODEL: PHS040Wa / END040W

FCC ID: BCE-PHS040WA / END040W

IC: 2386C-PHS040WA/ END040W

CMIIT ID: 2017DJ0327

CMIIT ID: 2020DJ0305

GB 8898-2011

Complies with  
IMDA Standards  
DA102350



R-R-GN-16  
MSP-COM  
GN-END040W



CCA119LP9630T5  
CCA117LP0460T0



006-190265  
006-000458



**EAC**



**Bluetooth®**